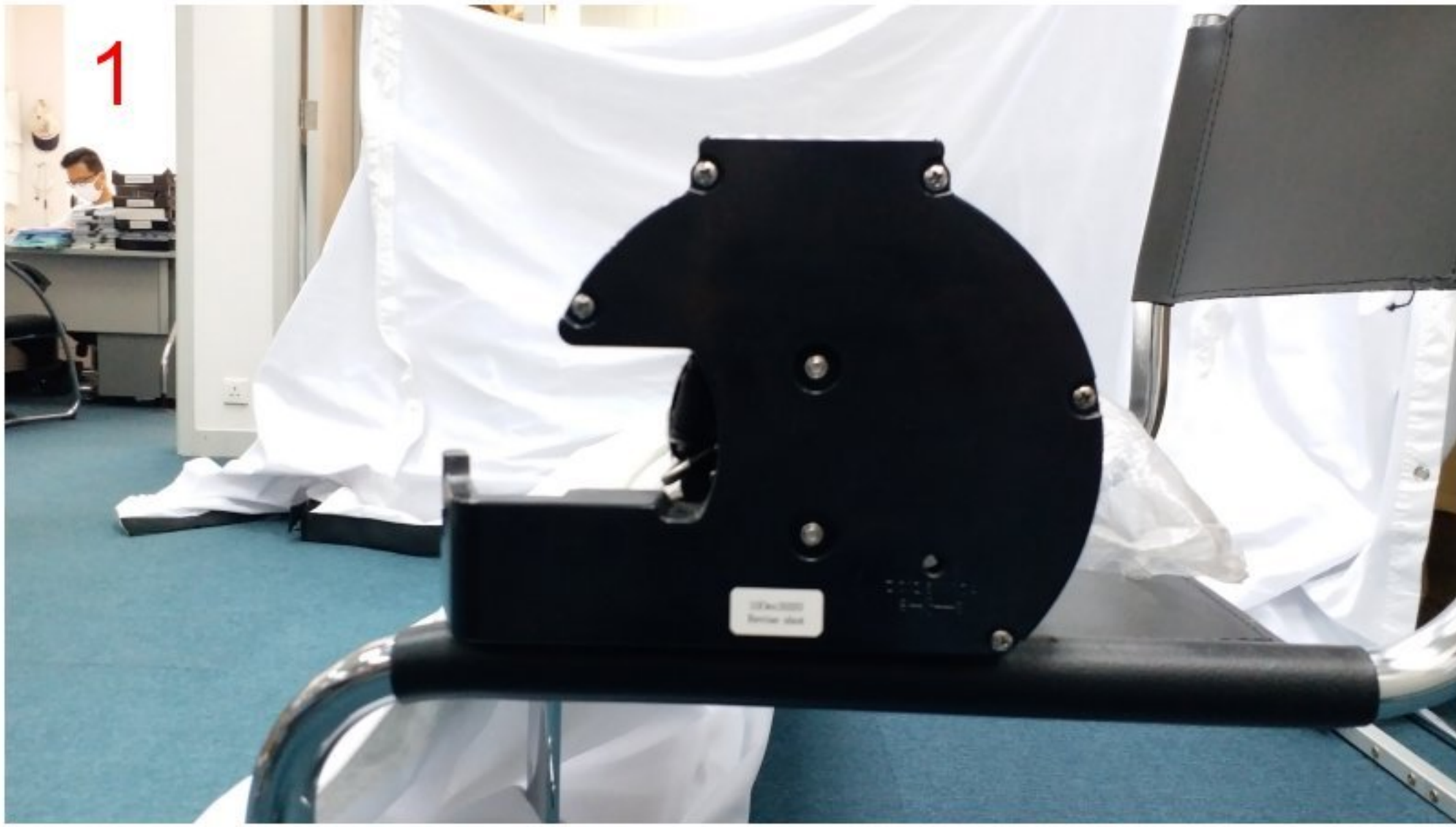


Reverse the steps to assemble the end cap hinge



Right side end cap



Release side net (Open Zipper)



Unscrew X 5 Pcs (Plastic End Cap)



Pull out Pro Arm set and motor



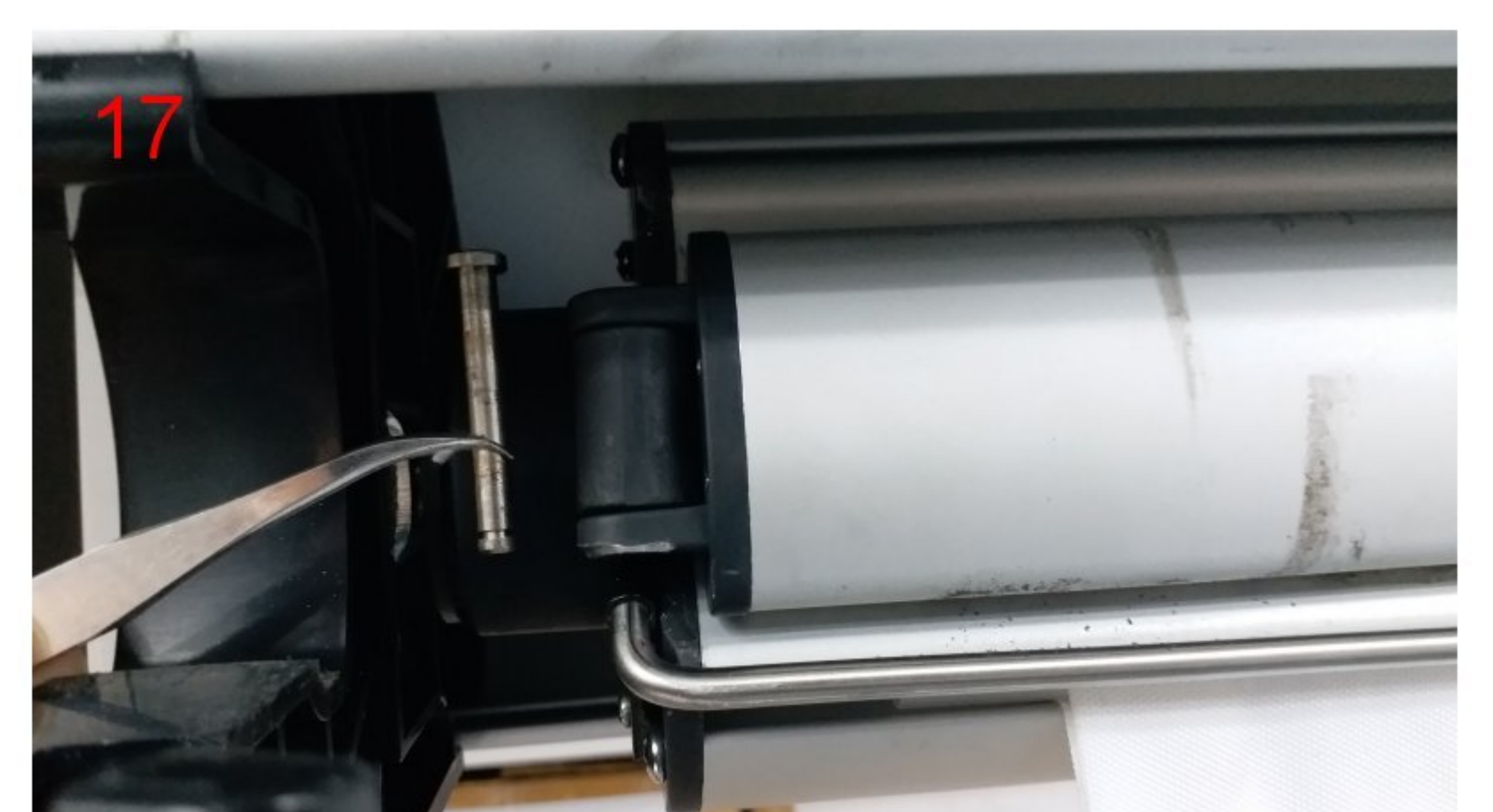
Release the " C " Clip



Pull out the End Cap and half length of motor



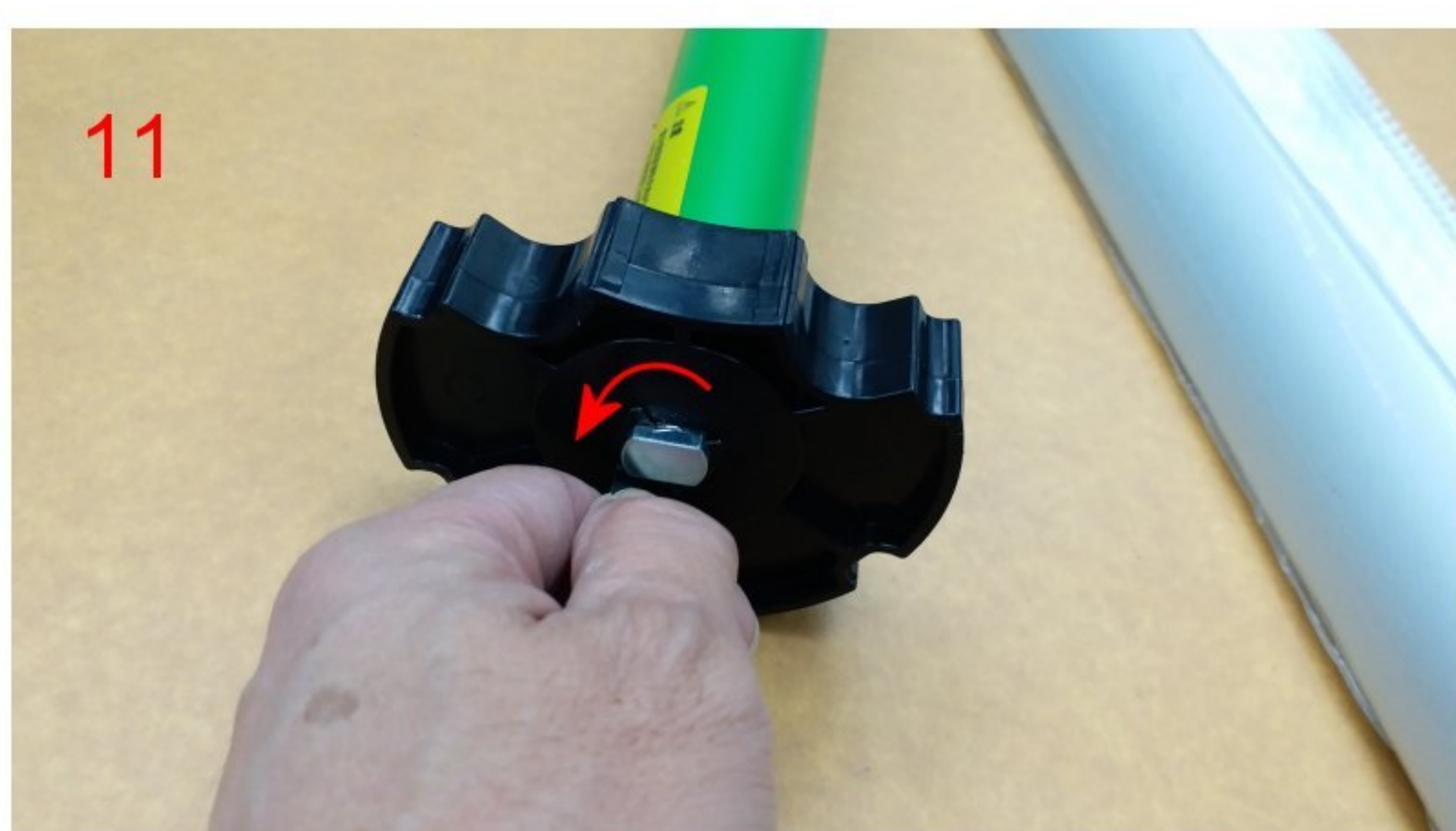
Take out the arm and motor parts



Pull out whole shaft pin



Unscrew X 2 Pcs



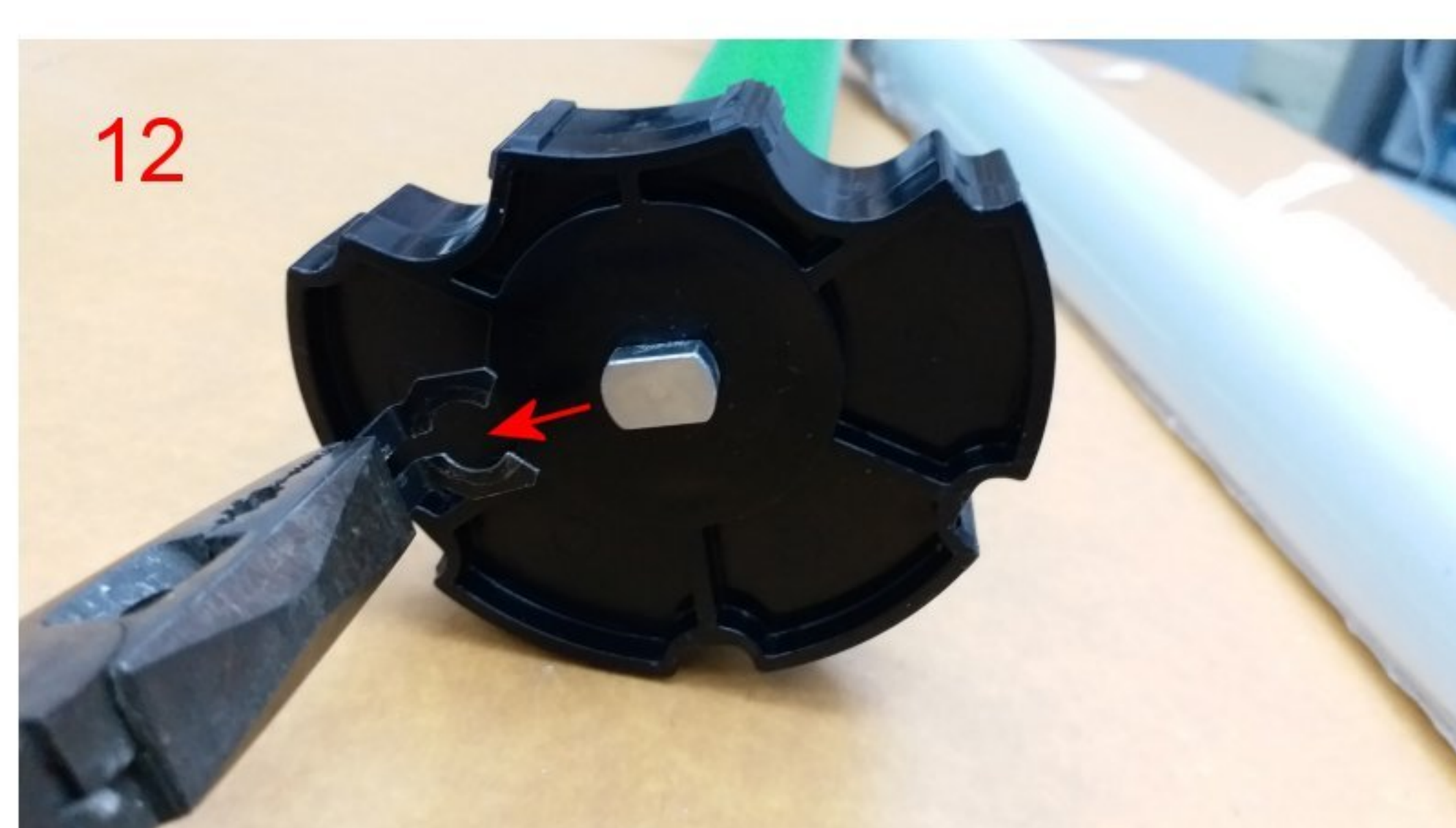
Spin the clip 90 degrees



Pull out the pro Arm



Pull out the End Cap



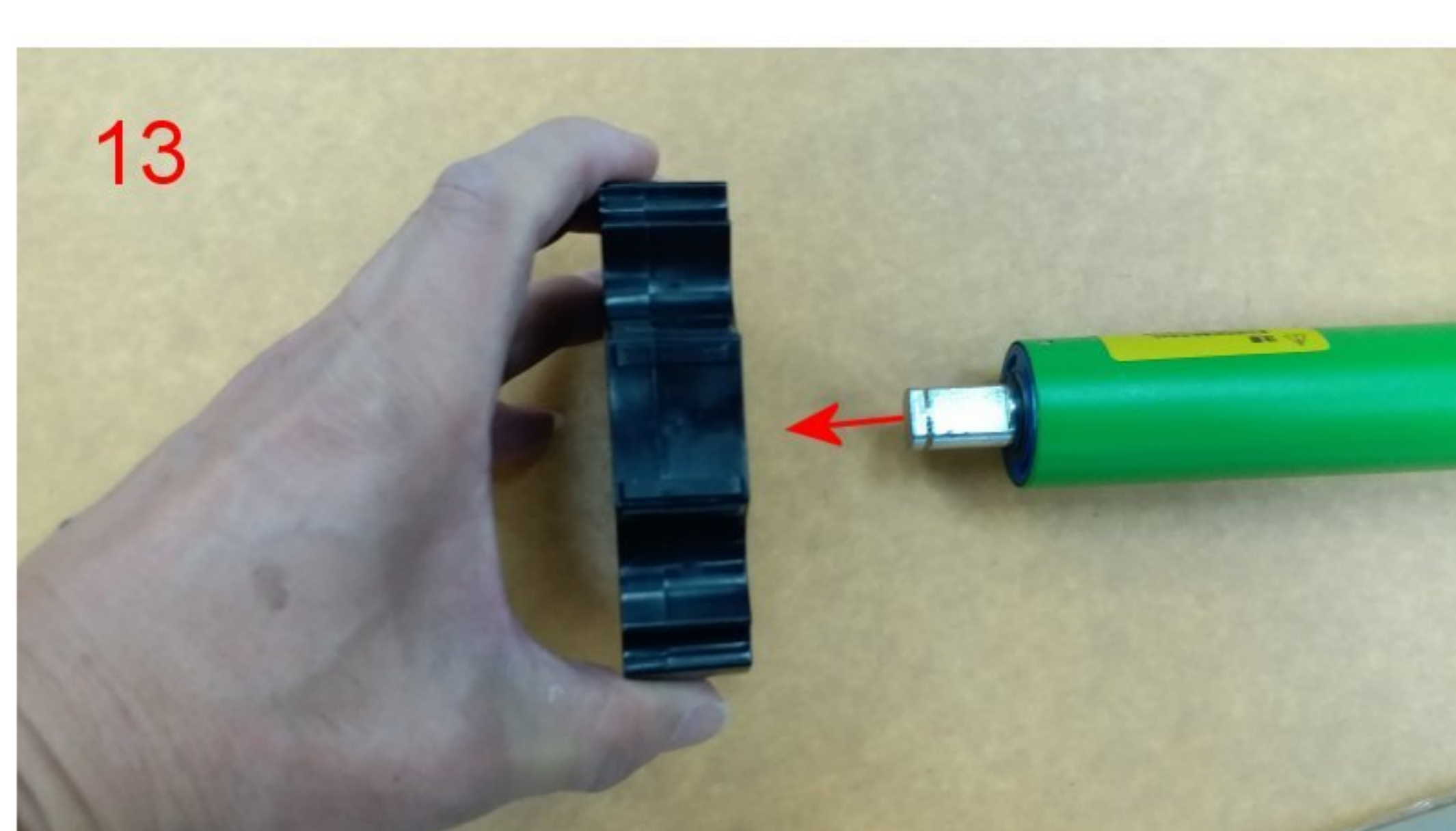
Pull out the clip



Unscrew X 4 Pcs (Pro Arm Hinge)



Unscrew X 7 Pcs (Pro Screen Tube End)



Pull out the Pro Drive Adapter



Pull out the hinge and replace with new hinge



Pull out the Top Net Arm



Pull out the Pro Screen Tube



The assembly of the motor is directional